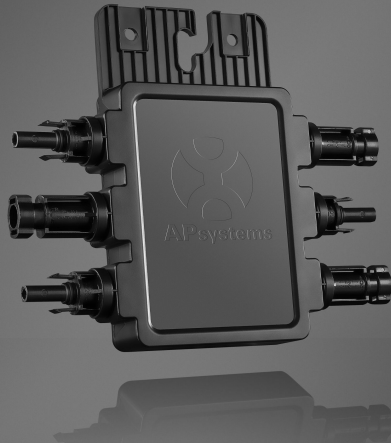


The global leader in
multi-platform **MLPE** technology



Rapid Shutdown Device OPT700-RS

- Rapid shutdown function meets the NEC 690.12 requirements.
- Once switch off AC breaker, rapid shut-down the output of PV modules.
- Monitor the working parameters of PV modules.
- Dual-input design. Easy installation.

OPT700-RS Technical Data

Model

OPT700-RS

Input Data (DC)

Maximum Input Voltage	50V Per Channel
Maximum Input Current	12A Per Channel
Maximum Input Power	450W Per Channel

Output Data (DC)

Maximum Output Voltage	100V
Maximum Output Current	12A
Maximum System Voltage	1500V

Mechanical Data

Operating Ambient Temperature Range	-40 °C to +70 °C (-40 °F to +158 °F)
Dimensions (without cable&connectors)	191mm x 160mm x 26.6mm
Weight	0.25kg / 0.55lbs
Enclosure Rating	IP68 / NEMA 6P

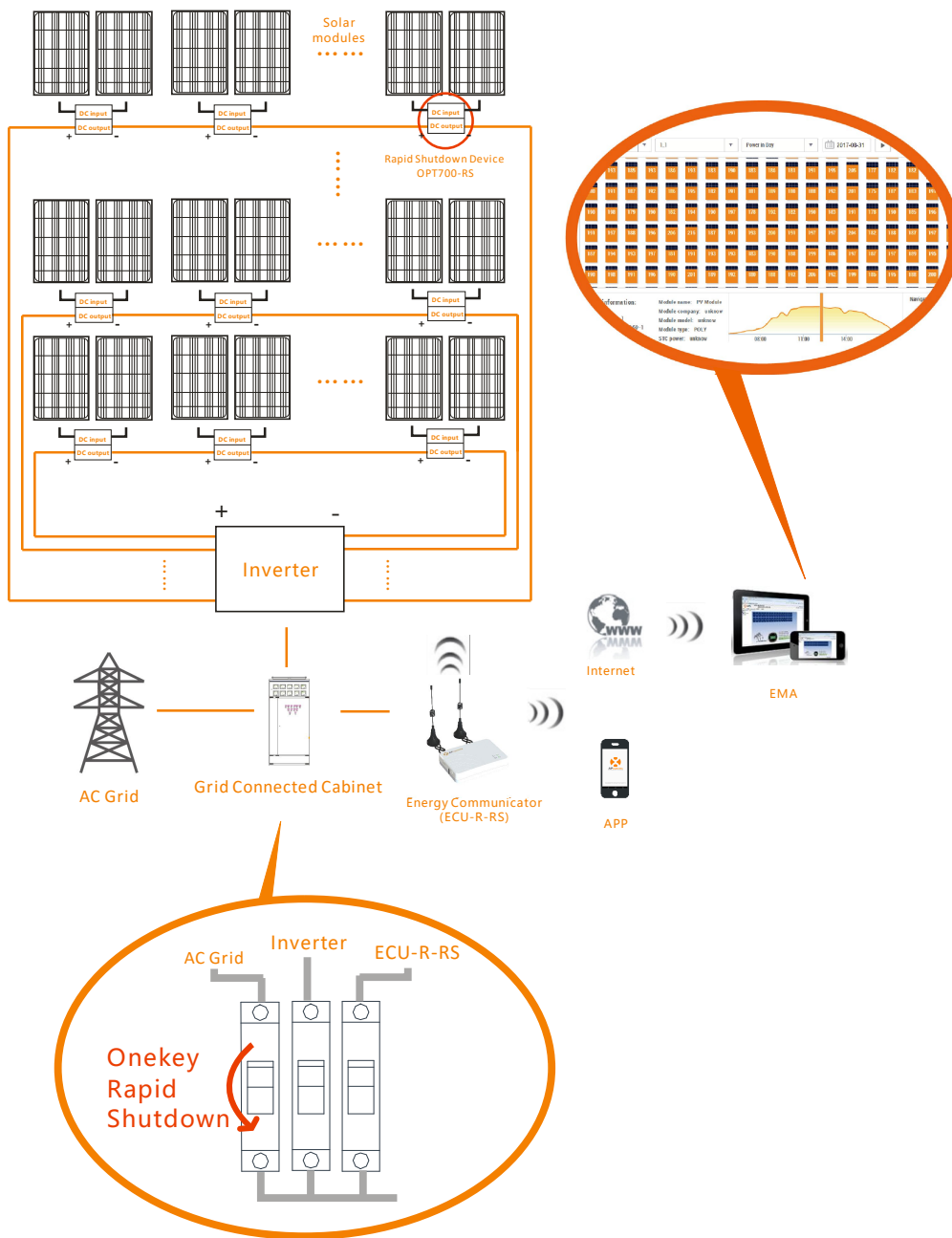
Features & Compliance

Communication	Wireless
Rapid Shutdown UL Listed	NEC 2017 690.12

Specifications subject to change without notice - please ensure you are using the most recent update found at www.APsystems.com

OPT700-RS with the function of monitoring and rapid shutdown, can gather the detailed working parameters of each PV module, transfer all the information to ECU-R-RS by wireless communication, and send this information to the users' terminal devices by the internet. Meanwhile, OPT700-RS will work continuously when there's heart-beat signal from ECU-R-RS. When in an emergency, by switching off the AC break to stop the ECU-R-RS, OPT700-RS can be rapidly shut down, and eliminate the high voltage on DC cable.

OPT700-RS Wiring Diagram



APsystems Shanghai:
 B403 No.188, Zhangyang Road, Pudong, Shanghai | +86 21 3392 8205